

Vantage Point

Your Partner in Agri Business • An AgVantage® Software, Inc. Electronic Publication • 877-282-6353 • www.agvantage.com

December, 2014



AGVANTAGE CUSTOMER SPOTLIGHT: EQUITY ELEVATOR & TRADING CO. WOOD LAKE, MN WEBSITE: EETWOODLAKE.COM

INDEX

Executive Conference Updates.....	p. 2
End of Year Updates.....	p. 3-4
Holiday Support Hours.....	p. 4
New Software Releases.....	p. 5

General Manager: Rod Winter

Controller: Anne Anderson

Location: Wood Lake, MN

Years Using AgVantage Software: Six years

Favorite Feature of AgVantage Software:

The fun and professional staff!

Company Description:

Equity Elevator & Trading Company provides services to its cooperative members in the following areas: Agronomy, Feed Production, Grain Marketing and Merchandising, and a Farm Supply Store.

Something Unique About the Cooperative:

Equity Elevator & Trading Co. has been a coop for over 102 years and is part of the Minnesota Grain & Feed Association's Century Club!



Equity Elevator & Trading Co. is located in "God's country" near one of Wood Lake's churches.



Production Staff—Equity Elevator & Trading Co.

2015 EXECUTIVE CONFERENCE UPDATE

MARCH 18-20 • THE RENAISSANCE HOTEL • NASHVILLE, TENNESSEE

Lori Campbell Conference Manager loric@agvantage.com



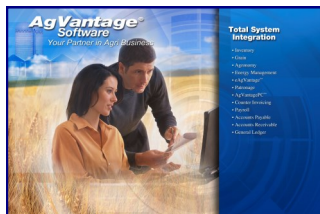
There is a lot of excitement for Nashville and registrations are starting to roll in for the Executive Conference. This is a wonderful educational and networking opportunity and a great way to stay current on your software and technology. The \$100 Early Bird Discount ends February 1st, so don't forget to register soon.

The registrations received so far indicate that there is some interest in post-conference group touring on Saturday, March 21st, so I will be looking into some options for both bus tours and walking to museums as a group. The Country Music Hall of Fame will definitely be on the list and is just a short walk from our conference hotel, the Renaissance, which is located in downtown Nashville.

There are links on agvantage.com for registering, making your hotel reservations, and viewing the Executive Conference brochure. AgVantage Dollars may be used to pay the \$595 registration fee. If you have any questions, please let me know.

Happy Holidays to you and your family!

SAVE THE DATE!
**AgVantage National Conference
 & User Exchange**
Airport Hilton, Minneapolis
June 17-19, 2015



AgVantage Software, Inc. Trade Show Schedule

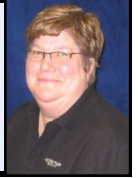
Minnesota Grain & Feed Assoc. Trade Show

Minneapolis, MN—Downtown Hilton, January 26-27, Booth #103
 Come and visit Michelle Blomberg, Valerie Ahlers, and Tim Machutt
 in the AgVantage booth.



AgVantage End of Year Updates & Reminders

Valerie Ahlers • Customer Services Representative • valeriea@agvantage.com
 Karen Tidd • Customer Services Representative • karent@agvantage.com



Payroll End of Year

W-2 information is CHECK DATE DRIVEN—the date on your paycheck will determine what year the wages are reported to the SSA so be sure to look ahead on your calendar to plan your last Payroll (PR) for the year. Doing a test run on Accuwage after downloading the file from BSO will help check for accuracy before the EFW2 file is submitted to SSA.

There are changes on the laser overlay this year- the YEAR and changes for reporting company-sponsored health insurance, so be certain to watch the message board for the latest in procedures and PTF's. Even though you do not generate the W-2's until after you have saved off the files after the last PR for 2014, usually these PTF's need to be applied previously. Also, watch for **e-trainings** on the End of Year procedures as an update or review of procedures.

We will have the new Federal Withholding tables on the Message Board after we find out what it is, but it is your responsibility for your state and local tax tables. The government is still discussing changes to the tax laws so watch carefully- if you are notified of changes or see information on them, please let us know so we can pass them on. If you have questions, email them to support@agvantage.com and we will help you with them. This also applies to local and school tax information.

As changes happen, PTF's may get updated so be sure to watch because there may be multiple messages on the Message Board and the list of PTF's may get updated. There will also be a checklist for the EOY procedures posted. Be sure if you have to "add" things in PR, such as reporting personal use of company vehicle, that you get that as part of the PR for 2014, before you do a 2015 PR.

1099 Reminders

Important Due Dates to Remember:

Recipients Copy: Jan. 31, 2015
IRS test file: Feb. 15, 2015
Electronic File: March 31, 2015

UPDATE TO 1099's: IRS reporting allows for masking SSN to the last 4 digits. Also this year we have added a letter format for 1099-MISC for AP 1099's.

1099-Misc.

Here are a few tips for the EOY 1099's for Accounts Payable vendors:

- The limit remains at \$600 so check your constant file to see if it contains that amount. Also check that your company phone number is there. This comes from the constant file.
- Check through your list of vendors to see who is marked to receive 1099's. Be sure you have their Fed. ID or SSN. **You can do this now.**
- REMEMBER, 1099's are determined by the CHECK DATE, not the date you merge or the invoice date so be sure you have all checks printed you want to be part of 1099's.
- We have added an IRS Name field in the Vendor Master to be populated IF the name on the Vendor account is different than the Federal ID or SSN. Companies have been getting notices from the IRS stating the name on the 1099 does not match the name on the SSN or Federal ID. *You may know the business as Tom's Lawn Care but the Name that is associated with the SSN is Tom Jones- then put that name on the IRS line.*
- When you run your 1099 report, the \$\$ will update the vendor master. If you need to make a correction, go to the vendor master and then enter the amount, however, do not run the report again.
- You can run test 1099's on plain paper to verify information and then rerun on the forms. There is also a letter format available now that can be run on company letterhead. Preprinted forms are still available in these formats -**Type G is government and has SSN listed** and **Type L is laser for the vendor and has masked SSN. R is for pin-fed forms.**
- Watch the Message Board for an update on procedures or PTF's that might affect Accounts Payable.
- We **highly recommend** electronically filing 1099's. You have until Feb 15th to run a test file. This is very beneficial, especially if it is your first time filing electronically.

(Continued on next page)

(Continued from previous page)

1099-Patr, Int, Div

It is highly recommended that a test file be submitted each year between 11/01/14 and 2/15/15 for states participating in the combined Fed/State filing program. See Publication 1220 for a list of states.

In the Customer Master file is a field for IRS name. ONLY populate this IF your account name is different than your Social Security number or Federal ID that you use to file your taxes.

Example: Account name - Joe and Mary Smith
Tax ID: 123-56-6789 (Joe Smith's number)
IRS Name – Smith Joe

Grain End of Year

There are new updates available for Version 8 only to void Deferred Payment Checks so be sure to check the Message Board and apply the PTF's.

Deferred Payment Checks may also be written before the End of the Year to have those checks available for your customers in January without waiting.

There are also several e-training classes on the E-Training Calendar for the End of Year processing which includes Deferred Payment Checks if you would like a review of the process.

**If you have not ordered your End of Year forms, please contact
Kari Apenhorst at karia@agvantage.com**

HOLIDAY SCHEDULE

We will be closed or have reduced hours on the following dates to allow our employees to enjoy the holidays with their families.

<i>Christmas Eve</i>	<i>Wednesday, 12/24</i>	<i>Open 8-Noon</i>
<i>Christmas Day</i>	<i>Thursday, 12/25</i>	<i>Closed</i>
<i>Day after Christmas</i>	<i>Friday, 12/26</i>	<i>Open 8-3</i>
<i>New Year's Eve</i>	<i>Wednesday, 12/31</i>	<i>Open 8-3</i>
<i>New Year's Day</i>	<i>Thursday, 1/1</i>	<i>Closed</i>

AGVANTAGE SOFTWARE NEW RELEASES AND FEATURES COMING SOON

BONNIE FOHRMAN
Vice President, Programming bonnief@agvantage.com



New Releases in AgVantage Software, Version 8:

Please see our Message Board for many Product Enhancements continuously available.

Agronomy

- New ability to record the FSA# in Field Maintenance

Accounts Receivable

- New ability to email statement from customer look up

AgVantage Edge Accounts Payable, Phase 1

- Released Beta

Feed

- On Feed Order Manager now shows Current Quantity on Hand not EOM Quantity

eAgVantage Grain

- Now allows zero for delivery Begin/End date for contract confirmation

Patronage

- Shows the division name at the top of the Equity lookup screen

Seed

- New Report of Treatments

Web Agronomy Phase 1

- Released Beta

Software Releases Coming Soon

Accounts Receivable

- Show ACH Draft Date for Combined Statements (328802)

Edge AP Phase 2

Feed

- Floorstock to use delivery date not ordered date in inventory (340323)

Grain

- Add commitment control to Summarize Position - Daily to Monthly (321395)
- Report of loads priced from Grain End of day pricing menu (328775)
- Price Confirmation – Delayed Price – print futures and basis price (333879)
- Grain Priced not Paid Report – add customer selection to screen (335229)
- Proof of Yield Report – Ability to filter Farm Id by customer (341293)

eAgVantage Seed

- Drill down to plan/order on dispatch by customer (330291)

Patronage

- Patronage Checks – update the APSCHEK file with the customer number (342775)

AgVantagePC Invoice

- Ability to pull work order from browse work orders screen (345585)

AgVantagePC Seed

- Carry Shipping Document instructions over to dispatch (345702)

AgVantagePC Time

- CDD 2014 Web based ability for Time (306569)

Web Agronomy Phase 2

